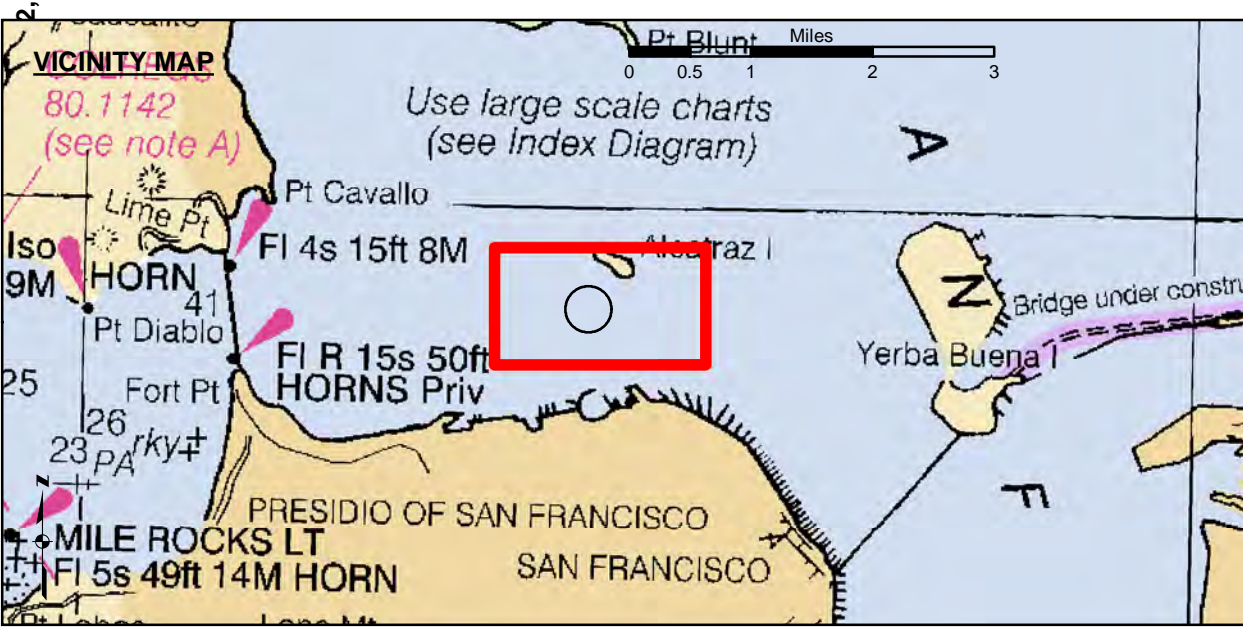
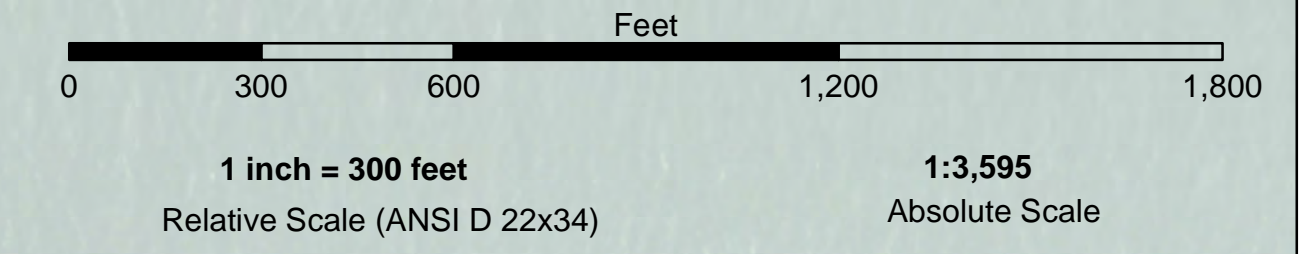


LAMBERT COORDINATES

POINT	X	Y
U.S.G.S. MON: 57 ELEV: - 14.00	6,005,367	2,123,290
TRANSAMERICA BUILDING	6,011,912	2,117,586
ALCATRAZ DISPOSAL SITE - (SF-11)		
1,000 FT. RADIUS	6,005,935	2,127,235
ALCATRAZ LIGHT	6,008,552	2,129,010
ALCATRAZ BUOY	6,008,367	2,127,186



- Federal Navigation Channel
- Shoaling Area
- Placement Area
- Anchorage Area
- Wreck Area
- Submerged Wreck
- Zone III Angle Points
- Beacon, General
- Obstruction Point
- Navigation Buoy
- Navigation Buoy
- Shoalest Sounding*
- Contour Lines Every 10' -20' to -120'

NOTES:
 HORIZONTAL COORDINATE SYSTEM:
 NORTH AMERICAN DATUM OF 1983 (NAD83), PROJECTED TO THE STATE PLANE COORDINATE SYSTEM (SPCS), CALIFORNIA ZONE III. DISTANCE UNITS IN U.S. FEET.

VERTICAL DATUM:
 SOUNDINGS ARE SHOWN IN FEET AND INDICATE DEPTHS BELOW MEAN LOWER LOW WATER.

THE INFORMATION DEPICTED ON THIS MAP REPRESENTS THE RESULTS OF A SURVEY CONDUCTED ON THE DATE INDICATED AND CAN ONLY BE CONSIDERED TO REPRESENT THE GENERAL CONDITION EXISTING AT THAT TIME.

BASE MAPS ARE USDA NAIP 2010.

*SHOALEST SOUNDING PER QUARTER PER REACH

DRAWING NOT TO BE USED FOR NAVIGATION. ONLY CHANNEL CONDITION AT DATE OF SURVEY. THE LOCATION OF ALL NAVIGATION AIDS ARE BASED ON INFORMATION PROVIDED BY THE U.S. COAST GUARD. BUOY LOCATIONS REPRESENT THE POSITION OF THE SINKER ONLY.

SOUNDINGS WERE TAKEN BY FATHOMETER AND ARE SHOWN TO THE NEAREST TENTH OF A FOOT. SOUNDINGS ARE BASED ON THE DATUM OF MEAN LOWER LOW WATER AT THE LOCALITY.

SURVEYED BY THE CORPS OF ENGINEERS.
 THE PROJECT DEPTH IS -40 FEET AT MLLW.

PLANE GRID AND COORDINATES ARE BASED ON LAMBERT PROJECTION, NAD 83, ZONE III CALIFORNIA AS DESCRIBED IN SPECIAL PUBLICATION NO. 235, PUBLISHED BY THE NATIONAL OCEAN SURVEY.

HORIZONTAL GPS CONTROL:
 COAST GUARD D-BEACON

VERTICAL CONTROL:
 BENCHMARK: 180 1936
 PID: HT0702
 MLLW = 3.972m(13.03ft)

NOAA STATION 9414290
 TIDE GAUGE LOCATION: SAN FRANCISCO

US Army Corps of Engineers
 San Francisco District
 450 Golden Gate Ave
 San Francisco, CA 94102

DISCLAIMER: The United States Government furnishes this information as a public service. It is not intended to be used for any purpose other than that for which it was prepared. The user assumes all liability for any use of this information. The user is responsible for the results of any application of the data for other than the intended purpose.

Chart Date: Feb 19, 2019

Surveyed By: LT COLONEL C.E. DISTRICT ENGINEER

Plotted By: PDT

Recommended By: Hydro Survey Team Leader

Checked By: Chief, Hydro Survey Section

Drawn By: Chief, Construction Branch

ALCATRAZ DISPOSAL SITE-SF11

CONDITION SURVEY

05 FEBRUARY 2019

Sheet Reference Number 1 of 1